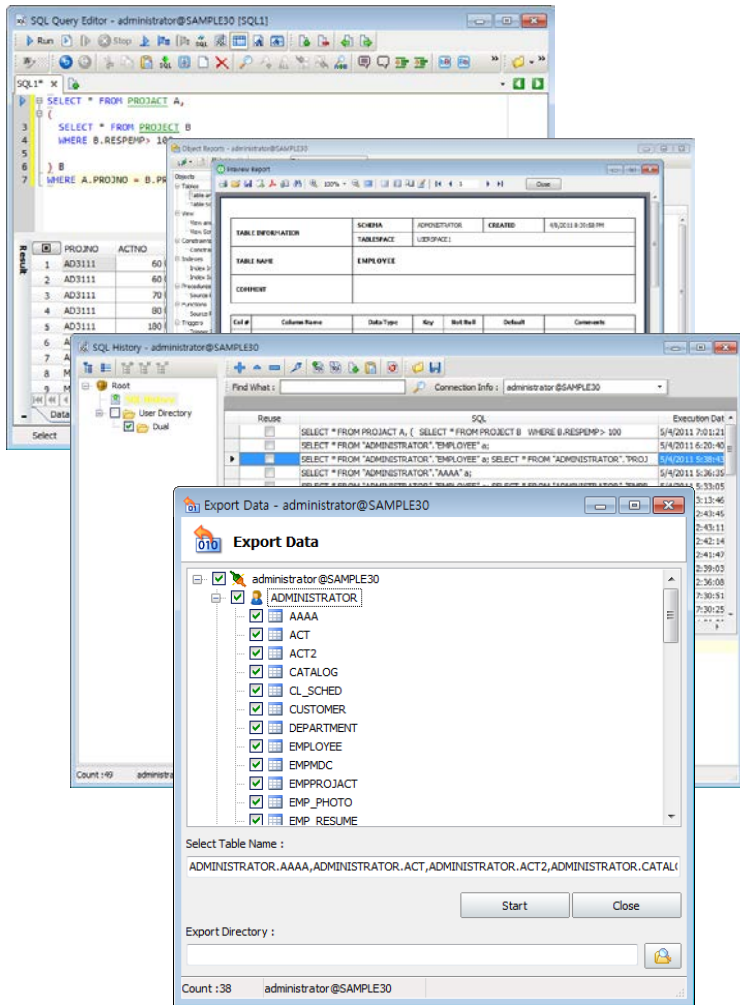


SQLGate for DB2

DB2 Database Development & Management Tool

SQLGate for DB2 is a database management tool, which provides you with an easy development and management for DB2 database applications.

It shortens development time and increases business efficiency of database manager and application developer by providing user-friendly interface and various features.



Major Features

Support Unicode (UTF8)

It supports Unicode. Multilingual handling is possible through this. It supports UTF8, UTF16 and AL32UTF8 Character Set.

User Friendly Interface

It consists of editor, grid and user friendly interface, which are convenient and powerful features. It satisfies user's needs by providing various styles and options to grid, such as XP, Float, Office and so on.

Execute Multi Query

It can send several queries and receive several values simultaneously. It provides system that you can observe several conditions at a glance. You can compare data easily.

Execute Queries Easily and Fast

You can create SQL code easily and check results of queries by using SQL Query Editor.

Moreover, you can create faster and more accurate SQL code because it provides auto completion feature.

Powerful Object Browser

It helps schema management, such as inquiry, creation, modification and deletion of objects by schema through object browser. You can inquire easily and quickly by linking with SQL Query Editor.

Provide Tools of Various Features

Even beginners can operate various database management tasks easily by providing various tools, such as Word Wrap, Bookmark, SQL Conversion, Report, Import/Export Utility and so on.

Report Tool to Print as Desired Types

Users can design directly and print out data by using Report Designer and shorten creation time of various reports.

SQLGate for DB2 Interface

If you want to more information, please refer to bellow site.

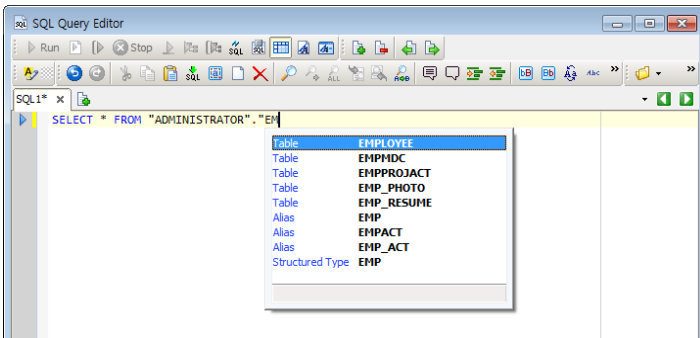
<http://www.antwiz.com>

Improved SQL Query Editor

Table Auto Completion

Table lists are displayed after From/Into/Update keyword automatically.

You can create SQL faster through this feature.

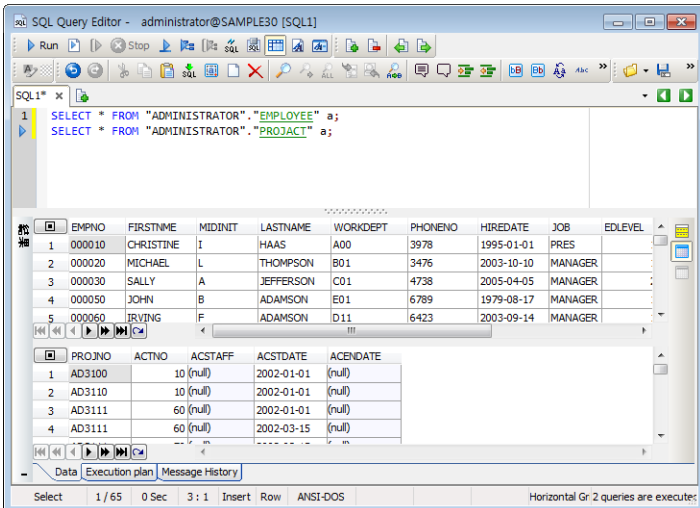


Variable Auto Completion

If you input dot (.) in SQL Query Editor, alias or field of table will be displayed automatically.

Multi Query Execution

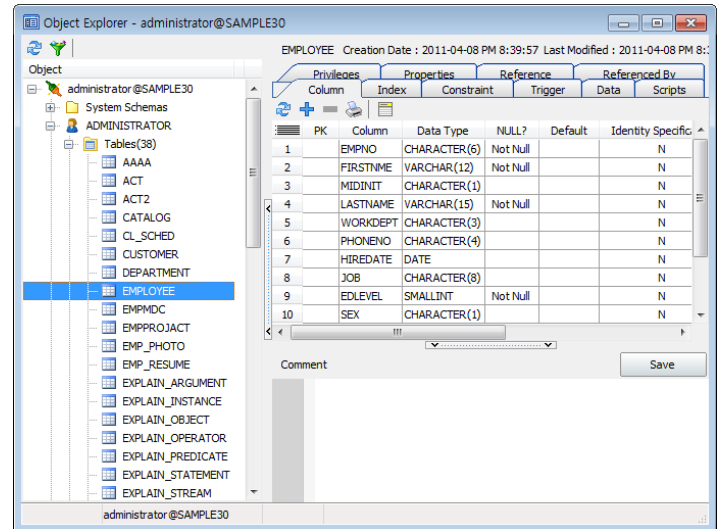
It sends several queries and receives several values simultaneously. You can compare data because you can observe several conditions at a glance.



Powerful Object Browser

Object browser is a schema management tool, which can inquire and manage objects by schema.

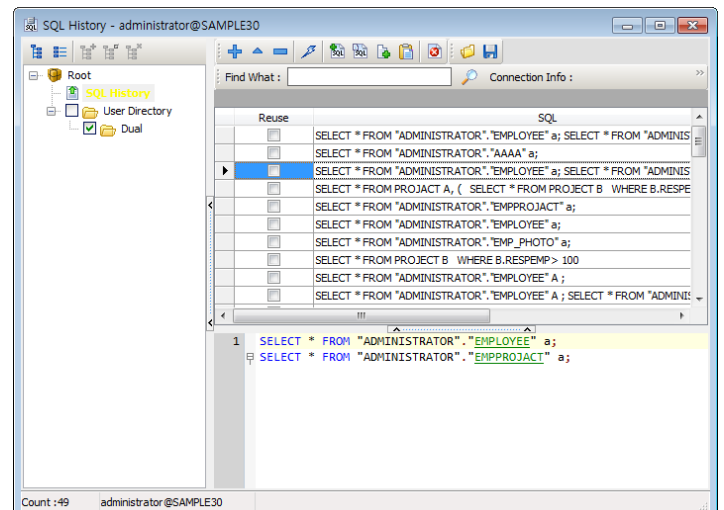
It contains necessary features to developer and manager, such as detail information of the selected object, script inquiry, privilege setting, creation, modification, deletion, printout and so on.



SQL History

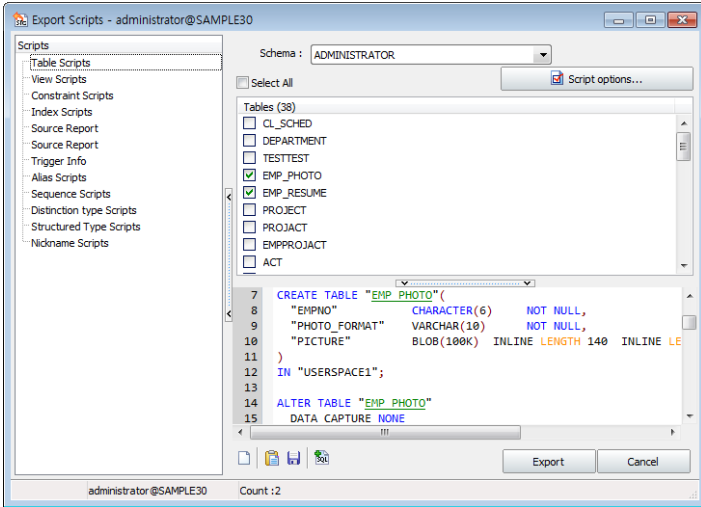
You can save SQLs, which is executed in SQL Query Editor and call them whenever.

You can work conveniently because you can reuse SQL by calling from SQL history; it means that you don't have to input the executed SQL again.



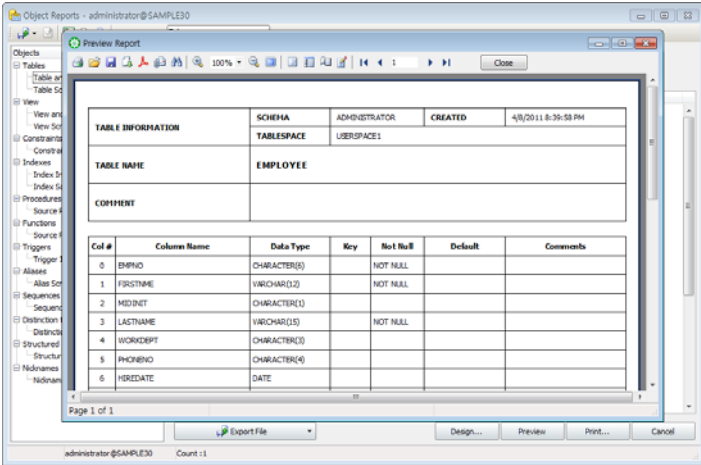
Export Scripts

If you use Script Export, you can extract DDL scripts information of several database objects and send them to SQL Query Editor easily.



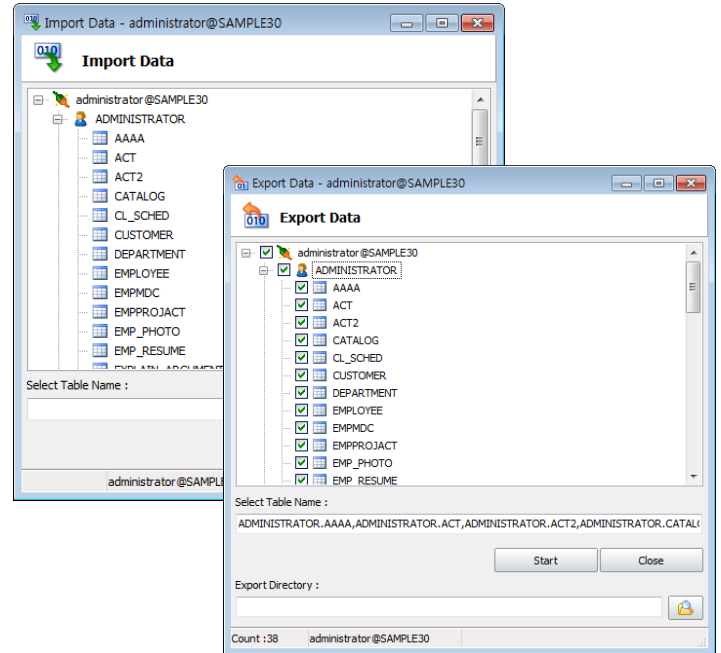
Report

You can design and print out various reports by yourself. You can handle report writing easily and fast because report can be designed and printed out in template format.



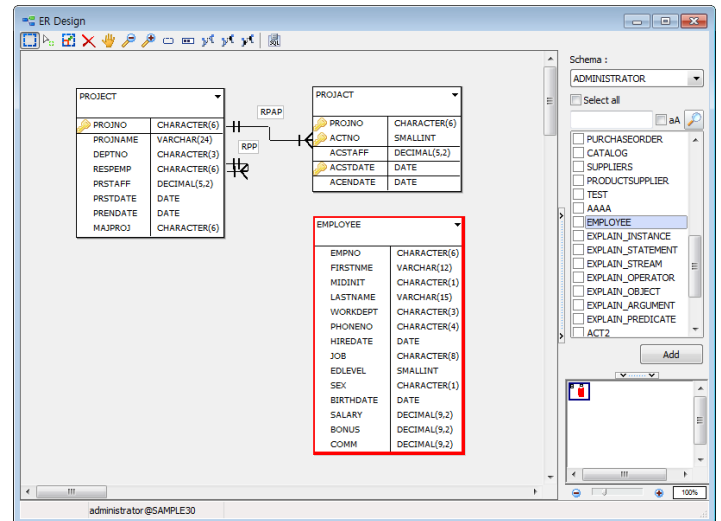
Data Import/Export

You can export data in table by using Export Data in various formats, such as MS Excel, DBF, Text, mdb file and so on with Export Data feature. Moreover, you can import created data into table by using Import Data tool.



ER Design

You can create ERD (entity-relationship diagram) by applying Reverse Engineering to relationship between tables in ER Design window. It provides basic features, which are necessary for ERD edit, such as region, text box and so on.



Antwiz Corp.

F3 Guk-wha B/D 40-13 Seongsan-dong , Mapo-gu , Seoul

sales@antwiz.com

T: +82 2-338-1876