

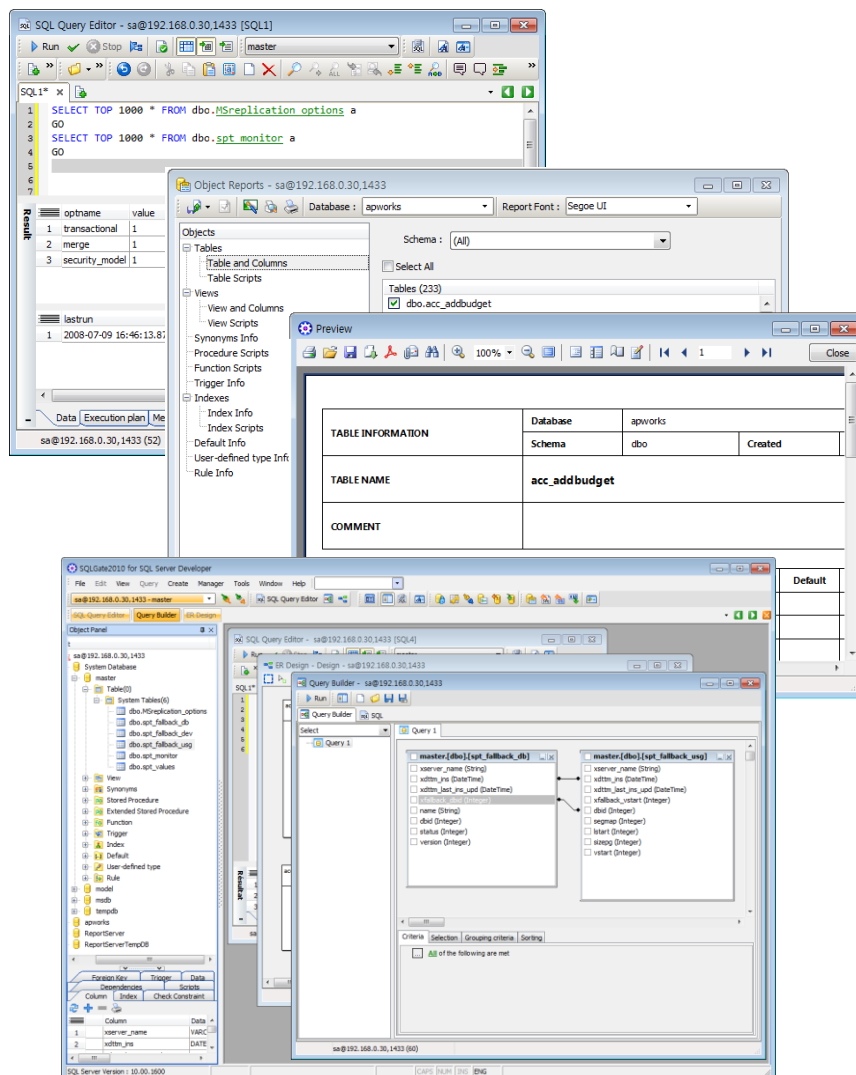
SQLGate 2010 for SQL Server

SQL Server Database Development and Management Tool

SQLGate 2010 for SQL Server is a database management tool, which helps application development and management of Microsoft SQL Server database.

It shortens development time and increases business efficiency of database manager and application developer by providing user friendly interface and various features.

You can create and execute Transact-SQL script easily because it supports code auto completion feature in SQL Query Editor.



Major Features

Support Unicode (UTF8)

Multilingual treatment is possible now because it supports Unicode in editor and grid.

User Friendly Interface

It consists of editor, grid and user friendly interface, which are convenient and powerful features. It satisfies user's needs by providing various styles and options to grid, such as XP, Float, Office and so on.

Execute Multi Query

It can send several queries and receive several values in grid and text type simultaneously. You can compare data easily because you can observe several conditions at a glance

Execute Query Easily and Fast

If you use SQL Query Editor and Query Builder, you can create and execute Transact-SQL script code.

Powerful Object Browser

It helps schema management, such as inquiry, creation, modification and deletion of objects by database through object browser. You can inquire easily and quickly by linking with SQL Query Editor.

Database Monitoring Features of Various Types

It provides monitoring/management features that you can inquire at a glance and manage database information that you want, such as Security Manager, Process Manager, Permission Manager, SQL server log and so on.

Provide Tools of Various Features

You can back up and restore database by using Database Backup Manager and Database Restore Manager and import and export data as excel, text, DBase file and so on by using Data Export and Data Import Tool.

Report Tool, which print out in wanted type

You can design report by yourself with report designer and print out it so creation time will be shortened.

SQLGate 2010 for SQL Server Interface

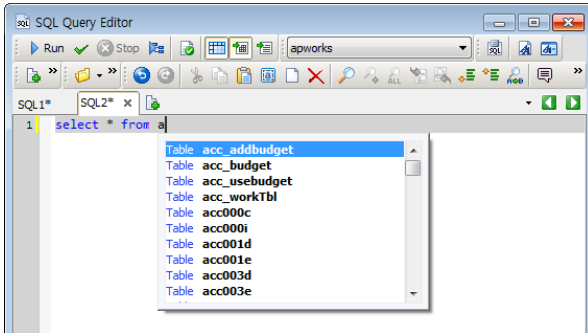
If you want to more information, please refer to bellow site.

<http://www.antwiz.com>

Improved SQL Query Editor (Dev/Exp)

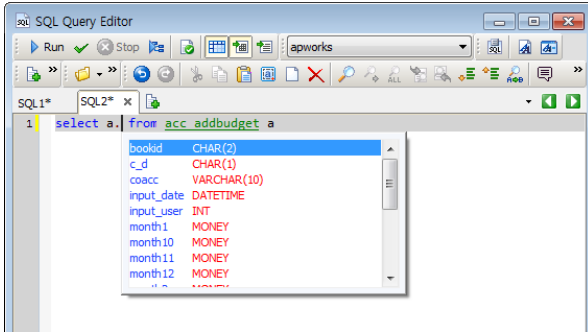
Table Auto Completion

Table lists are displayed after From/Into/Update keyword automatically. You can create SQL faster through this feature.



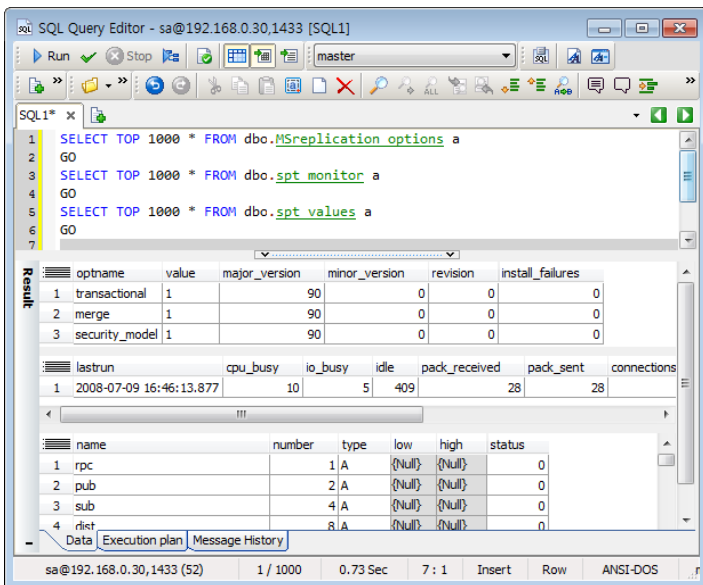
Field Auto Completion

If you input dot (.) in SQL Query Editor or PL/SQL Query Editor, alias or field of table will be displayed.



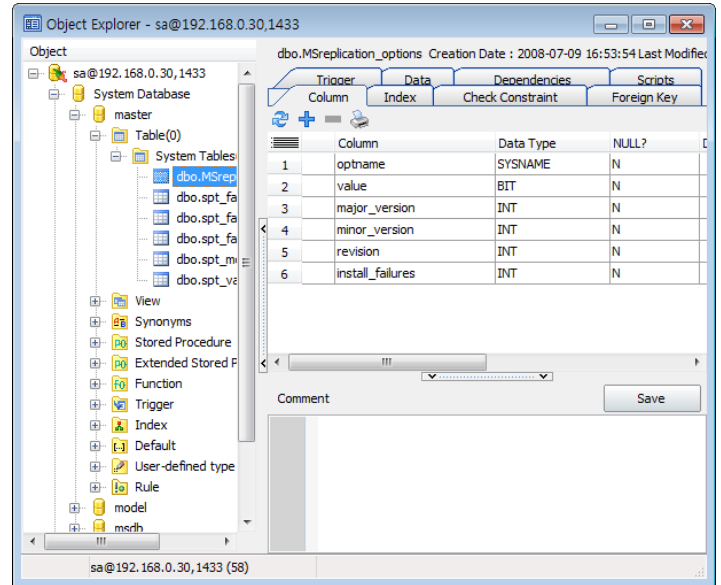
Multi Query Execution (Dev/Exp)

It sends several queries and receives several values simultaneously. You can compare data because you can observe several conditions at a glance.



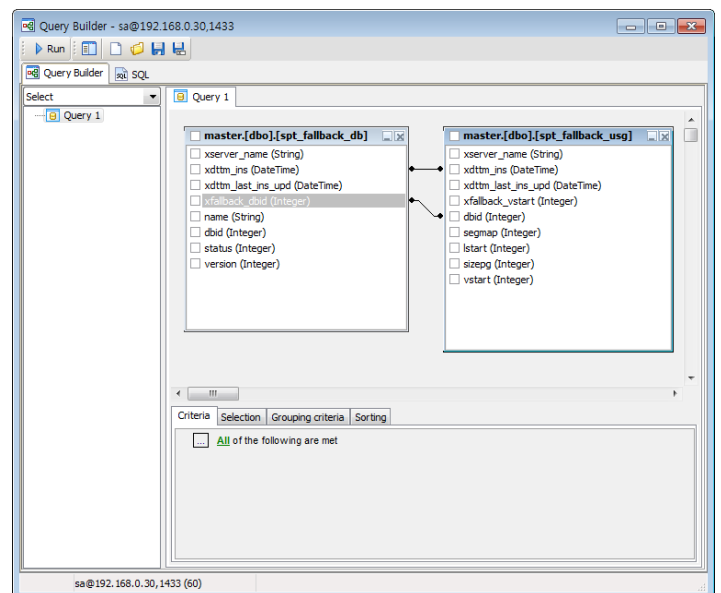
Powerful Object Browser / Object Panel (Dev/Exp)

Object browser is an object management tool, which can inquire and manage objects by database. It contains necessary features to developer and manager, such as detail information of the selected object, script inquiry, privilege setting, creation, modification, deletion, printout and so on. Moreover, you can create query and inquire objects more conveniently because it supports object panel, which can inquire in main screen of program.



Easy and Convenient Query Builder (Dev/Exp)

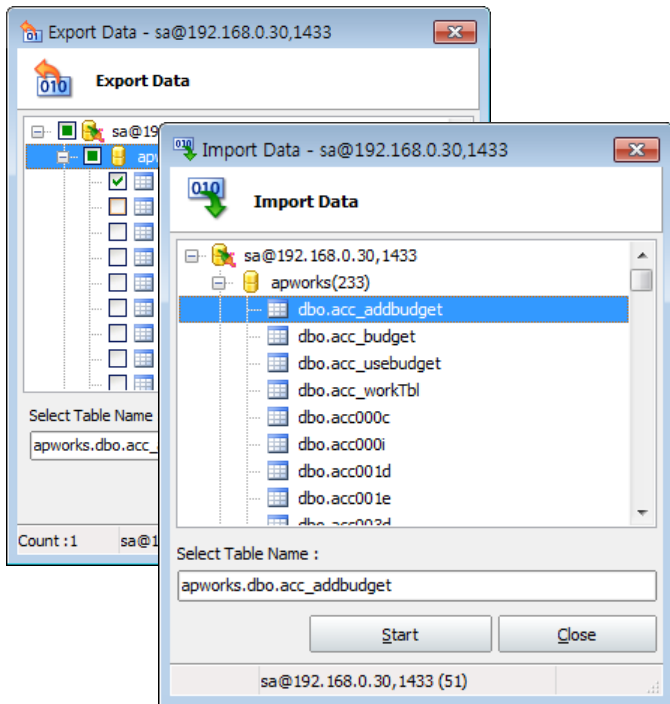
Query Builder helps that you can add query objects(table, view) and create easily statements of join between tables, filtering(Where) and sorting(Order by) with simple mouse operation because it is linked to object panel. You can check created Select query and results through execution.



Data Import/Export Tool (Dev/Exp)

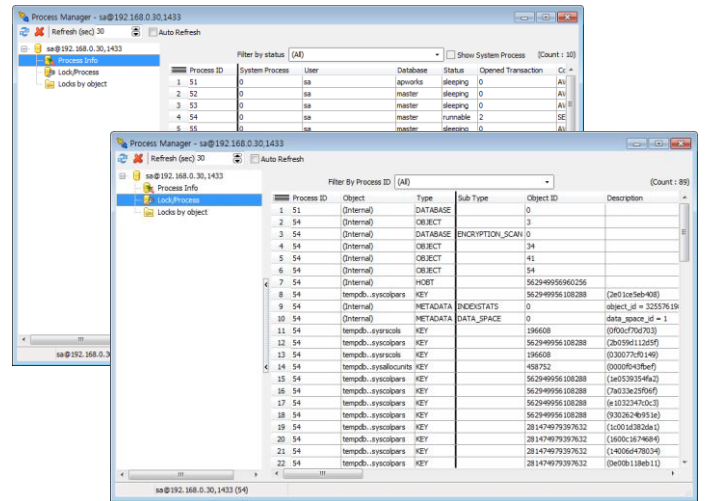
You can export data in table by using Export Data in various formats, such as Excel, DBase, Text file and so on with Export Data feature.

Moreover, you can import created data into table by using Import Data tool.



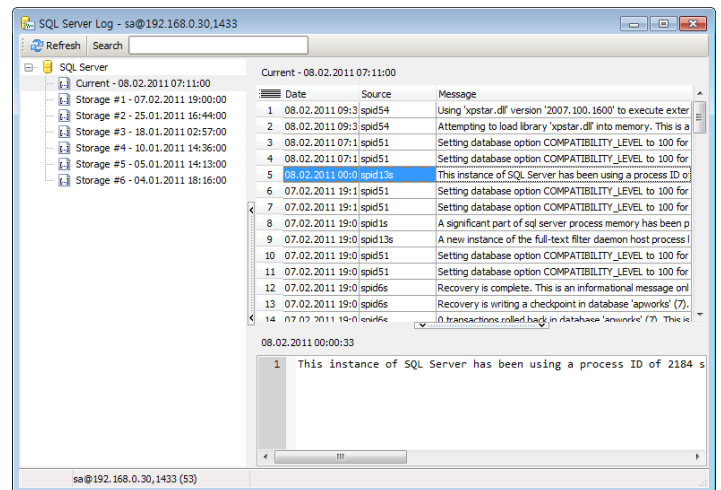
Process Manager (Dev)

Process Manager inquires connected process lists, which are connected to server, and shows status by each process, usage of system resource and so on. You can inquire process lock information and object lock information and kill it.



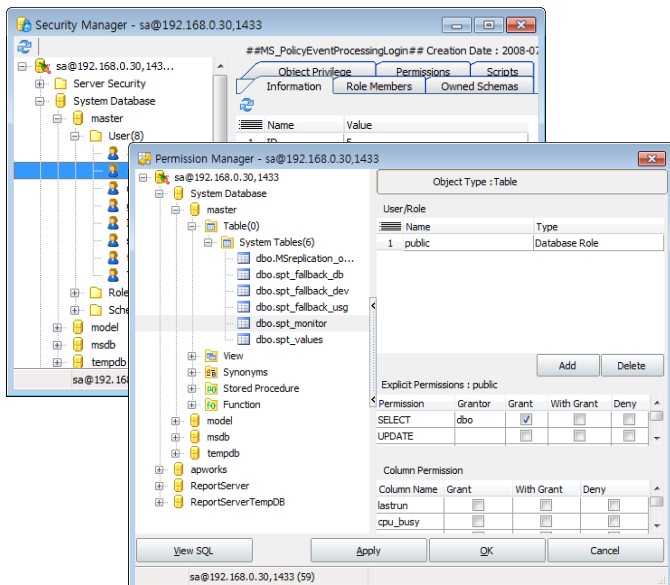
SQL Server Log (Dev)

You can inquire log file of server by using SQL Server Log. You can inquire current log file and saved log file of past date.



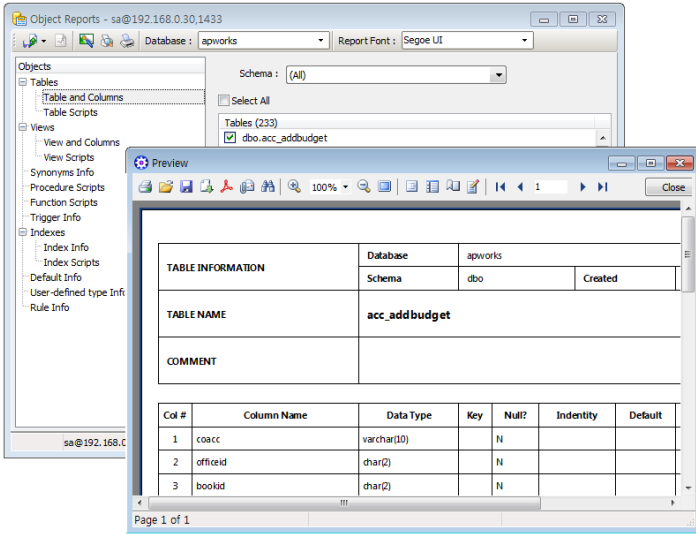
Security Manager / Permission Manager (Dev)

Security Manager can inquire server security objects (login, server role) of connected server and security objects (user, role, schema) of each database at a glance. Moreover, Permission manager can manage assigned permission to database and objects.



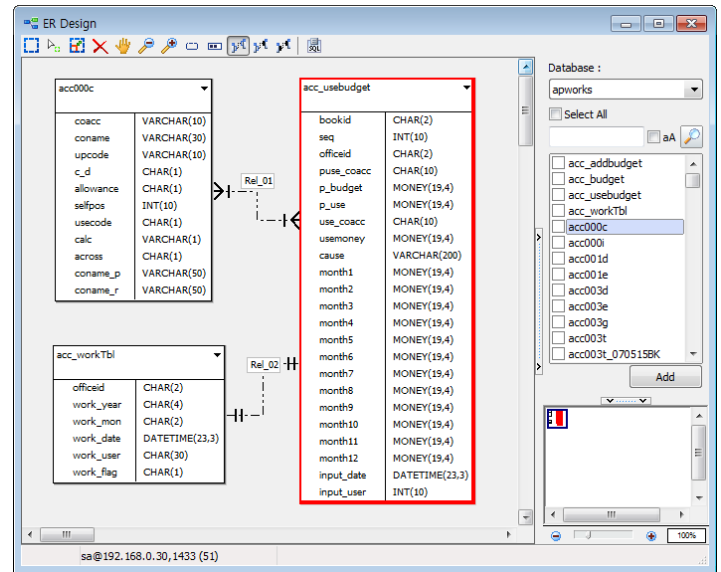
Report (Dev/Exp)

You can design and print out various reports by yourself.
You can handle report writing easily and fast because report can be designed and printed out in template format.



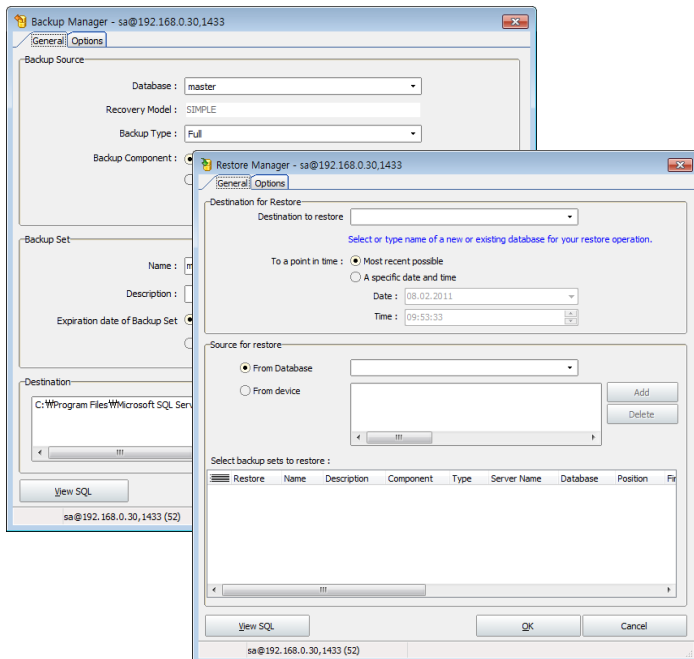
ER Design (Dev)

You can create ERD (entity-relationship diagram) by applying Reverse Engineering to relationship between tables in ER Design window. It provides basic features, which are necessary for ERD edit, such as region, text box and so on.



Backup / Restore Manager (Dev)

Backup Manager supports whole backup, auto backup, and transaction log backup of database. Moreover, Restore Manager helps restoration by providing various options, which are necessary to restore database.



Antwiz Corp.
F3 Guk-wha B/D 40-13 Seongsan-dong, Mapo-gu, Seoul
sales@antwiz.com
T: +82-2-338-1876