

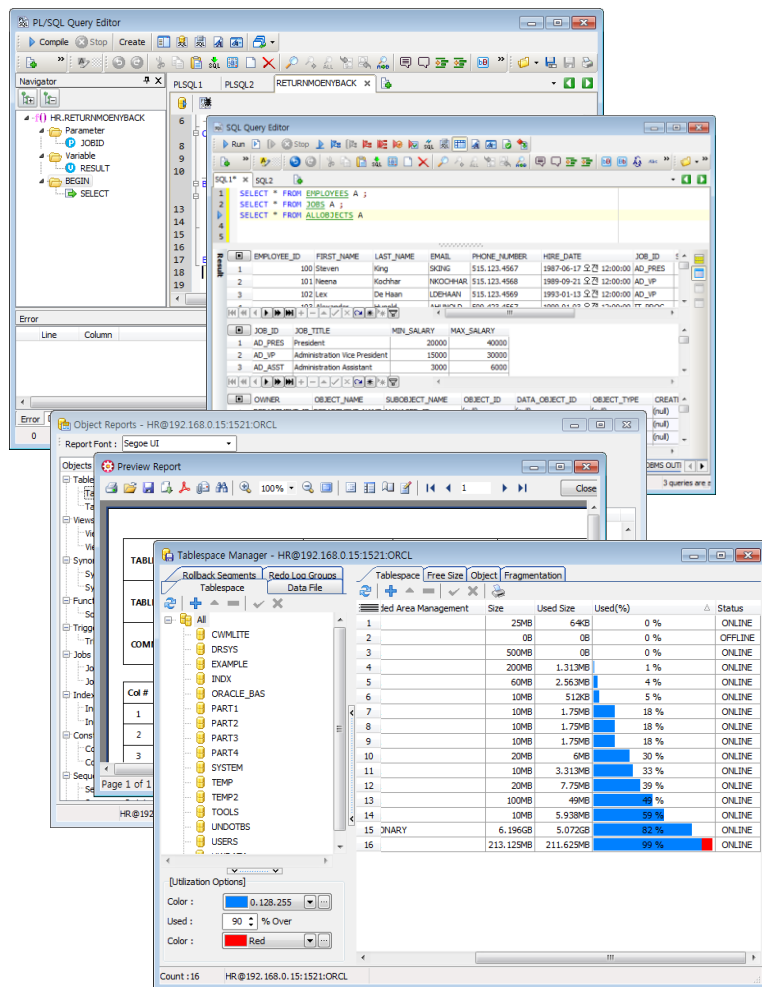
# SQLGate 2010 for Oracle

## Oracle Database Development & Management Tool

SQLGate 2010 for Oracle is a powerful database management tool, which provides you with an easy development and management for Oracle database applications.

It shortens development time and increases business efficiency of database manager and application developer by providing user friendly interface and various features.

If you use features such as SQL and PL/SQL code development, Debugging, Tuning and Query Builder, you can create and execute SQL easily. Moreover, Net login feature allows you to connect to server conveniently without installing Oracle client.



### SQLGate 2010 for Oracle Interface

If you want to more information, please refer to bellow site.

<http://www.antwiz.com>

### Major Features

#### Support Unicode (UTF8)

It supports multilingual SQL and data perfectly.

It supports all of KO16KSC5601, UTF8 and AL32UTF8 perfectly.

#### Provide Various Connection Method to Oracle

It supports OCI method, which connects through SQL\*Net, and Net method, which directly connects through TCP/IP without installing Oracle client.

#### User Friendly Interface

It consists of editor, grid and user friendly interface, which are convenient and powerful features. It satisfies user's needs by providing various styles and options to grid, such as XP, Float, Office and so on.

#### Execute Multi Query

It can send several queries and receive several values simultaneously. It provides system that you can observe several conditions at a glance. You can compare data easily.

#### Execute Queries Easily and Fast

You can create, debug and execute SQL and PL/SQL easily by using SQL Query Editor, PL/SQL Query Editor, PL/SQL Debugger and Query Builder.

#### Powerful Object Browser

It helps schema management, such as inquiry, creation, modification and deletion of objects by schema through object browser. You can inquire easily and quickly by linking with SQL Query Editor.

#### Database Monitoring Features of Various Types

It provides various database monitoring features, such as Security Manager, Session Browser, Tablespace Manager, Database Information, Server Statics, Extents Viewer and so on.

#### Provide Tools of Various Features

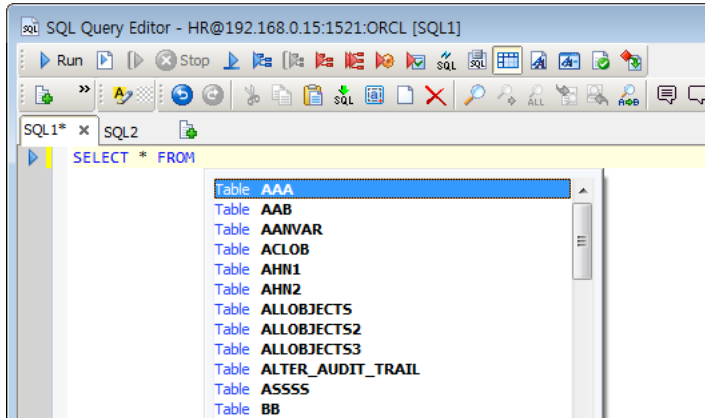
Even beginners can operate various database management tasks easily by providing various tools, such as SGA Trace/Optimization, TKProf Tool, Analyze Manager, PL/SQL Wrapper, Oracle Imp/Exp Utility, TNS Name Editor and so on.

## Improved SQL Query Editor & PL/SQL Query Editor (Dev/Exp)

### Table Auto Completion

Table lists are displayed after From/Into/Update keyword automatically.

You can create SQL faster through this feature.



### Variable Auto Completion.

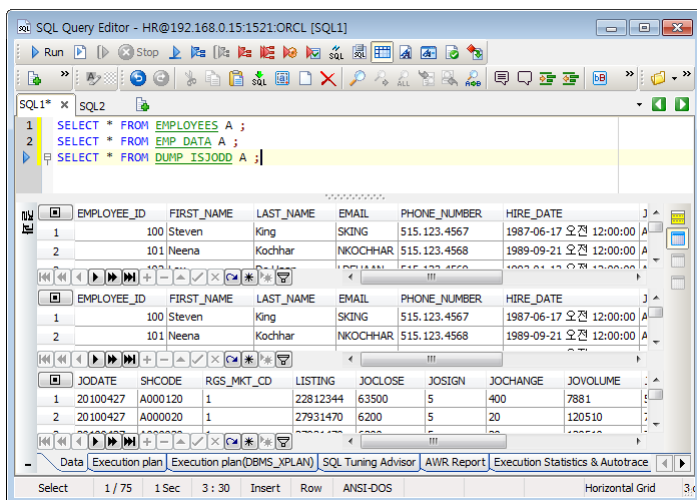
If you type more than 3 characters of declared variables in PL/SQL Query Editor, it will find adjusting variables automatically and display them PL/SQL

### Field Auto Completion

If you input dot (.) in SQL Query Editor or PL/SQL Query Editor, alias or field of table will be displayed automatically.

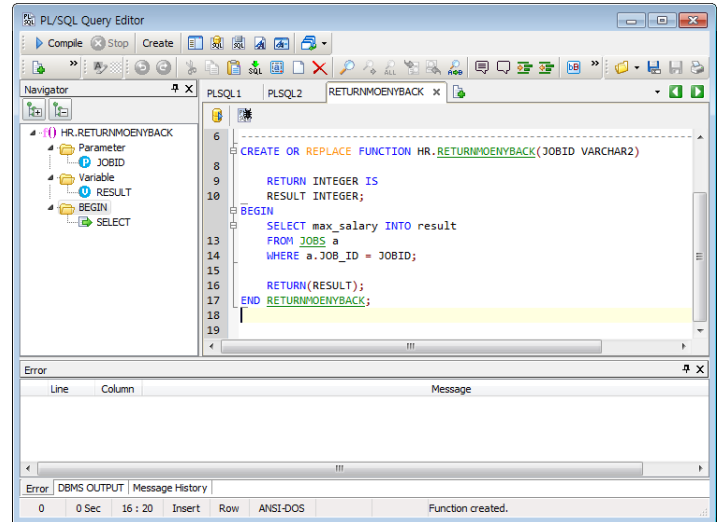
## Multi Query Execution (Dev/Exp)

It sends several queries and receives several values simultaneously. You can compare data because you can observe several conditions at a glance.



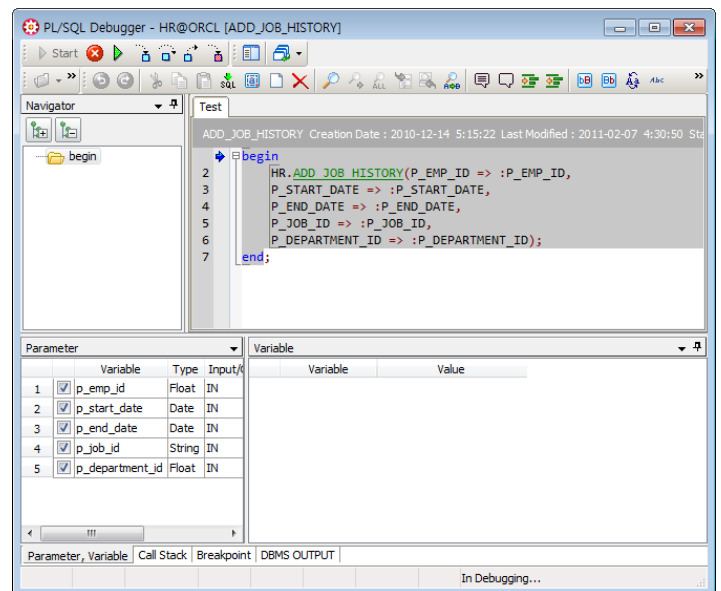
## PL/SQL Query Editor (Dev/Exp)

You can execute PL/SQL block or create Function/Procedure/Package and compile them. You can find type and position of error accurately with error trace feature.



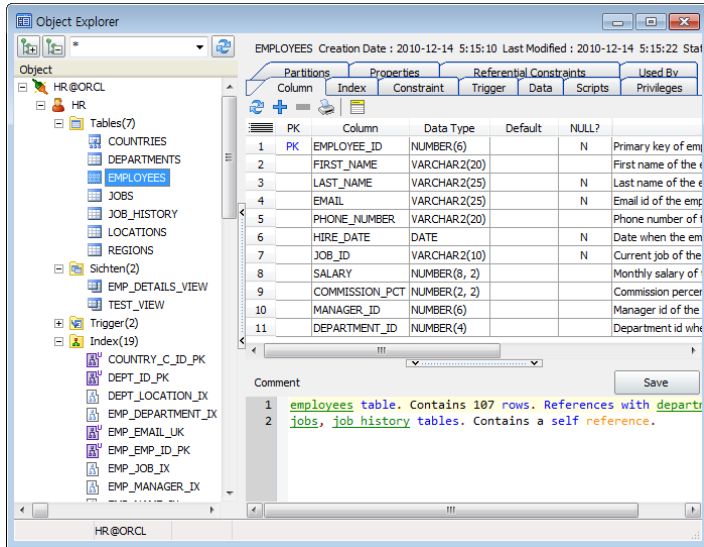
## PL/SQL Debugger (Dev/Exp)

You can debug Function/Procedure/Package sources step by step. You can check each parameter value and variable value in real time.



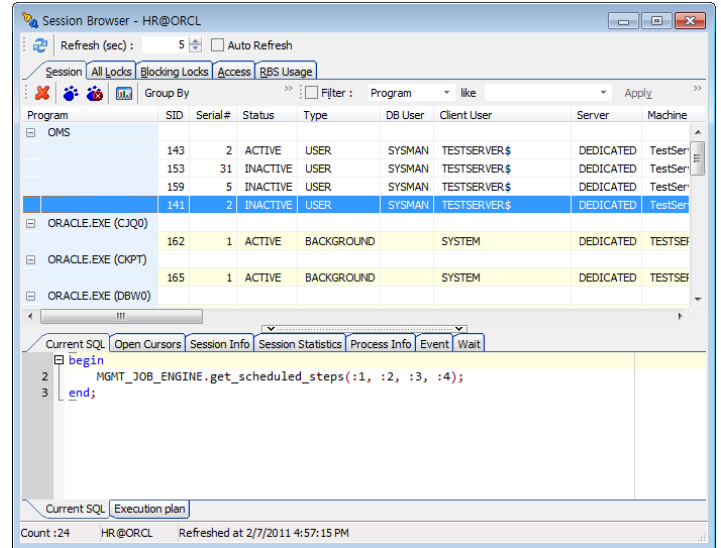
## Powerful Object Browser (Dev/Exp)

Object browser is a schema management tool, which can inquire and manage objects by schema. It contains necessary features to developer and manager, such as detail information of the selected object, script inquiry, privilege setting, creation, modification, deletion, printout and so on.



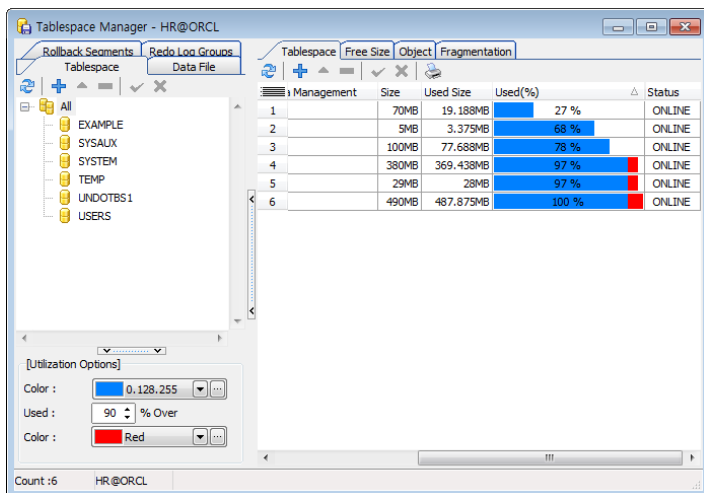
## Session Browser (Dev/Exp)

It shows status of existing Background/User session, Lock session and so on and usage of system resource. Moreover, you can inquire current SQL of the session, Open cursor, Session information, Session statistics, Process information and so on and set or release Trace.



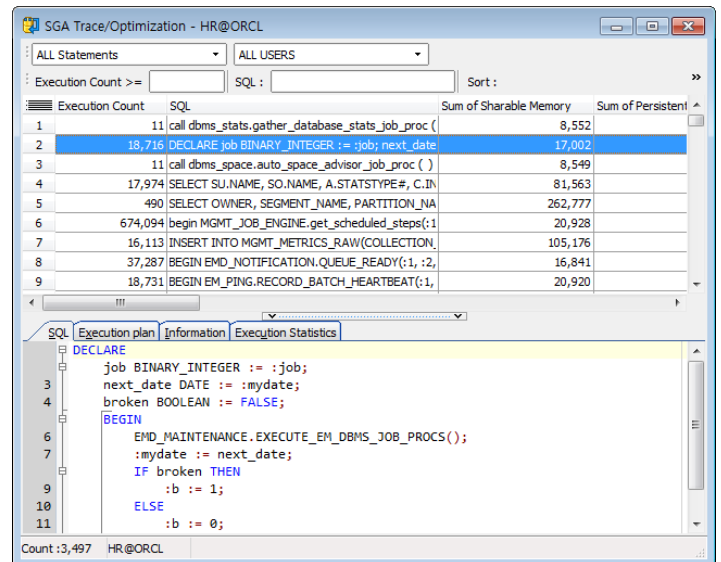
## Tablespace Manager (Dev/Exp)

You can inquire tablespace, data file, rollback segment and redo log group of database. It supports all necessary features for tablespace management, such as addition, modification and deletion of tablespace.



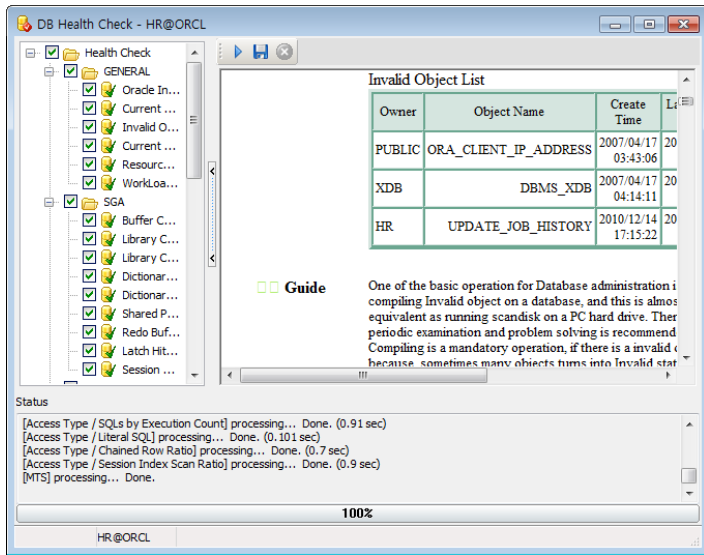
## SGA Trace/Optimization (Dev)

You can inquire V\_\$SQLAREA view information. View V\_\$SQLAREA can inquire parsing, memory use and disk IO information about SQLs, which exist in SGA shared pool.



## Database Health Check (Dev)

You can report basic information, SGA, Wait Event, I/O, Access Type and MTS information of server by using DB Health Check. Moreover, you can save result screen by converting into html type.



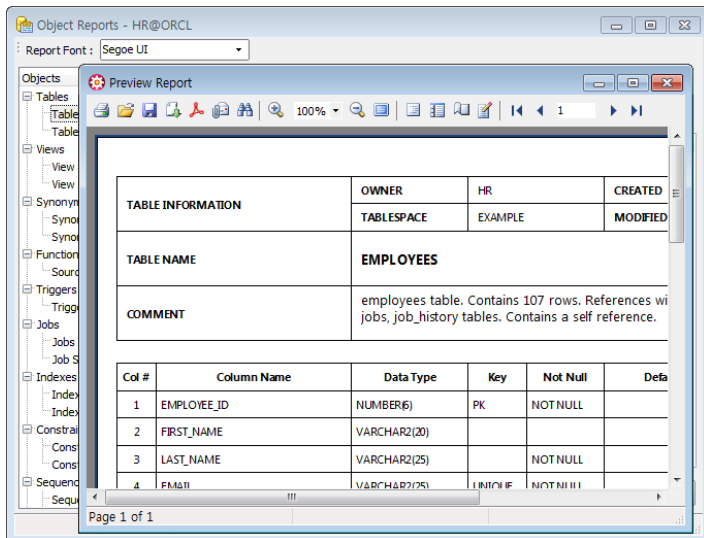
## Data Import/Export (Dev/Exp)

You can export data in table by using Export Data in various formats, such as MS Excel, DBF, Text, mdb file and so on with Export Data feature. Moreover, you can import created data into table by using Import Data tool.



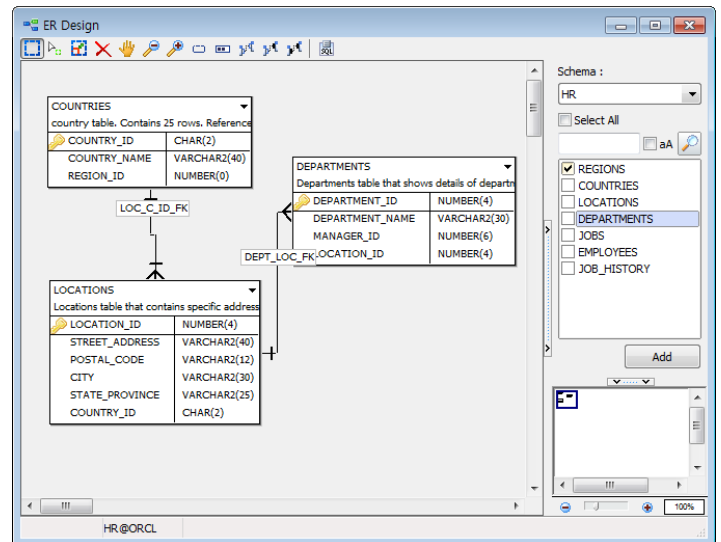
## Report (Dev/Exp)

You can design and print out various reports by yourself. You can handle report writing easily and fast because report can be designed and printed out in template format.



## ER Design (Dev)

You can create ERD (entity-relationship diagram) by applying Reverse Engineering to relationship between tables in ER Design window. It provides basic features, which are necessary for ERD edit, such as region, text box and so on.



Antwiz Corp.  
F3 Guk-wha B/D 40-13 Seongsan-dong, Mapo-gu, Seoul  
[sales@antwiz.com](mailto:sales@antwiz.com)  
T: +82-2-338-1876